

2002

STUDENT FACT BOOK



October 1, 2002

Prepared by Nikki Andrews, Registrar
[For WPI use only]

2002 FACT BOOK

Table of Contents

	<u>Page</u>
Fall 2002	1
Admissions	7
Undergraduate Enrollment	12
Graduate Enrollment	18
Retention and Graduation	26

Fall 2002

CURRENT ENROLLMENT PROFILE - FALL 2002

	FULL-TIME	PART-TIME	NON-DEGREE	TOTAL
UNDERGRADS	2708	49	10	2767
GRADS	360	480	195	1035
TOTAL	3068	529	205	3802

	FEMALE		MALE	
UNDERGRADS	625	23%	2083	77%
GRADS	267	26%	768	74%

UNDERGRADS	NUMBER	PERCENTAGE
Asian/Pacific Islander	180	7%
Black	32	1%
Hispanic	80	3%
Native American	8	0%
White	2191	81%
Non-Resident Alien	129	5%
Unreported	91	3%

GRADS	NUMBER	PERCENTAGE
Asian/Pacific Islander	33	4%
Black	9	1%
Hispanic	8	1%
Native American	0	0%
White	439	52%
Non-Resident Alien	349	42%
Unreported	2	0%

ENTERING FRESHMEN (CLASS OF 2006) FROM:					
California	7	Mississippi	1	South Carolina	2
Colorado	3	Montana	3	Texas	4
Connecticut	70	New Hampshire	81	Virginia	4
Delaware	1	New Jersey	16	Vermont	9
Florida	13	New York	40	Washington	4
Illinois	2	North Dakota	1	West Virginia	1
Massachusetts	336	Ohio	4	Wisconsin	1
Maryland	8	Oklahoma	1	Wyoming	1
Maine	35	Pennsylvania	6		
Michigan	4	Rhode Island	37		

States represented	28
Countries represented	16

**GENDER & ETHNICITY BY FIRST MAJOR
FULL-TIME UNDERGRADUATE STUDENTS**

	WHITE	%	BLACK	%	HISP	%	ASIAN	%	NATIVE AMER	%	NON-RES ALIEN	%	UNK	%	FEMALE	%	MALE	%	DEPT TOTALS
ENGINEERING																			
BIOMEDICAL	90	79%	1	1%	4	4%	9	8%	0	0%	6	5%	4	4%	58	51%	56	49%	114
CIVIL (INCL EV)	148	88%	2	1%	4	2%	4	2%	1	1%	5	3%	5	3%	46	27%	123	73%	169
CHEMICAL	103	90%	1	1%	3	3%	2	2%	0	0%	3	3%	3	3%	37	32%	78	68%	115
ELECTRICAL	360	75%	7	1%	15	3%	46	10%	1	0%	39	8%	15	3%	44	9%	439	91%	483
INDUSTRIAL	11	37%	0	0%	2	7%	1	3%	0	0%	13	43%	3	10%	11	37%	19	63%	30
MECHANICAL	472	86%	8	1%	17	3%	23	4%	2	0%	11	2%	17	3%	99	18%	451	82%	550
MANUFACTURING	11	73%	0	0%	1	7%	2	13%	0	0%	1	7%	0	0%	3	20%	12	80%	15
UNDECLARED/ED	57	89%	1	2%	2	3%	3	5%	0	0%	1	2%	0	0%	14	22%	50	78%	64
SCIENCES																			
BIOLOGY/BIOTECH	186	85%	6	3%	6	3%	9	4%	0	0%	5	2%	7	3%	151	69%	68	31%	219
BIOCHEMISTRY	48	84%	2	4%	1	2%	1	2%	0	0%	3	5%	2	4%	29	51%	28	49%	57
CHEMISTRY	25	96%	0	0%	0	0%	0	0%	0	0%	1	4%	0	0%	10	38%	16	62%	26
COMPUTER SCIENCE	420	79%	1	0%	12	2%	55	10%	3	1%	20	4%	19	4%	44	8%	486	92%	530
MATH	58	85%	0	0%	0	0%	6	9%	0	0%	1	1%	3	4%	22	32%	46	68%	68
PHYSICS	43	83%	1	2%	0	0%	3	6%	0	0%	2	4%	3	6%	8	15%	44	85%	52
UNDECLARED/SC	4	0%	0	0%	0	0%	1	0%	0	0%	1	0%	2	0%	5	0%	3	0%	8
OTHER																			
ECON/SOC, TECH, POL	10	100%	0	0%	0	0%	0	0%	0	0%	0	0%	0	0%	5	50%	5	50%	10
HUMANITIES	9	82%	0	0%	0	0%	2	18%	0	0%	0	0%	0	0%	2	18%	9	82%	11
INTERDISC	10	71%	0	0%	2	14%	1	7%	0	0%	1	7%	0	0%	6	43%	8	57%	14
MANAGEMENT	105	73%	2	1%	10	7%	9	6%	1	1%	12	8%	5	3%	27	19%	117	81%	144
UNDECLARED	21	72%	0	0%	1	3%	3	10%	0	0%	1	3%	3	10%	4	14%	25	86%	29
TOTAL	2191	81%	32	1%	80	3%	180	7%	8	0%	126	5%	91	3%	625	23%	2083	77%	2708

**GENDER & ETHNICITY BY MAJOR
FULL-TIME AND PART-TIME GRADUATE STUDENTS**

	WHITE	%	BLACK	%	HISP	%	ASIAN	%	NATIVE AMER	%	NON-RES ALIEN	%	UNK	%	FEMALE	%	MALE	%	DEPT TOTALS
ENGINEERING																			
BIOMEDICAL	13	65%	1	5%	0	0%	0	0%	0	0%	6	30%	0	0%	8	40%	12	60%	20
CIVIL	37	74%	1	2%	0	0%	1	2%	0	0%	10	20%	1	2%	19	38%	31	62%	50
CHEMICAL	5	16%	0	0%	0	0%	0	0%	0	0%	26	84%	0	0%	7	23%	24	77%	31
ELECTRICAL	50	47%	1	1%	2	2%	9	8%	0	0%	44	42%	0	0%	19	18%	87	82%	106
FIRE PROTECTION	51	62%	0	0%	0	0%	1	1%	0	0%	30	37%	0	0%	10	12%	72	88%	82
MECHANICAL	38	51%	3	4%	1	1%	1	1%	0	0%	31	42%	0	0%	15	20%	59	80%	74
MANUFACTURING	10	43%	1	4%	0	0%	1	4%	0	0%	11	48%	0	0%	2	9%	21	91%	23
MATERIALS	6	46%	0	0%	0	0%	1	8%	0	0%	6	46%	0	0%	6	46%	7	54%	13
SCIENCES																			
BIOLOGY/BIOTECH	20	77%	0	0%	1	4%	0	0%	0	0%	5	19%	0	0%	14	54%	12	46%	26
CHEMISTRY	5	24%	0	0%	0	0%	0	0%	0	0%	16	76%	0	0%	8	38%	13	62%	21
COMPUTER SCIENCE	55	31%	0	0%	0	0%	10	6%	0	0%	109	62%	1	1%	47	27%	128	73%	175
MATH	29	60%	1	2%	2	4%	0	0%	0	0%	16	33%	0	0%	20	42%	28	58%	48
NATURAL SCIENCE																			
PHYSICS	2	20%	0	0%	0	0%	0	0%	0	0%	8	80%	0	0%	1	10%	9	90%	10
OTHER																			
INTERDISCIPLINARY	8	73%	0	0%	0	0%	0	0%	0	0%	3	27%	0	0%	2	18%	9	82%	11
MANAGEMENT	110	73%	1	1%	2	1%	9	6%	0	0%	28	19%	0	0%	44	29%	106	71%	150
TOTAL	439	52%	9	1%	8	1%	33	4%	0	0%	349	42%	2	0%	222	26%	618	74%	840

NOTE: Includes all graduate students accepted into a degree or certificate program.

ENROLLMENT OF UNDERGRADUATE MINORITIES AND WOMEN

	FA85	FA86	FA87	FA88	FA89	FA90	FA91	FA92	FA93	FA94	FA95	FA96	FA97	FA98	FA99	FA00	FA01	FA02
Underrepresented Minorities*	45	47	31	28	37	38	39	58	90	84	84	115	126	125	124	111	114	120
Percentage of Total	1.7%	1.8%	1.2%	1.1%	1.3%	1.4%	1.4%	2.1%	3.2%	3.1%	3.2%	4.5%	4.8%	4.7%	4.6%	4.1%	4.2%	4.4%
Women	494	461	467	465	489	492	504	517	542	548	537	552	578	584	609	626	610	633
Percentage of Total	19.0%	17.4%	17.9%	18.5%	17.8%	18.3%	18.4%	18.6%	19.3%	20.5%	20.6%	21.6%	21.9%	21.9%	22.8%	23.2%	22.5%	23.4%

*Includes Blacks, Hispanics, and Native Americans.

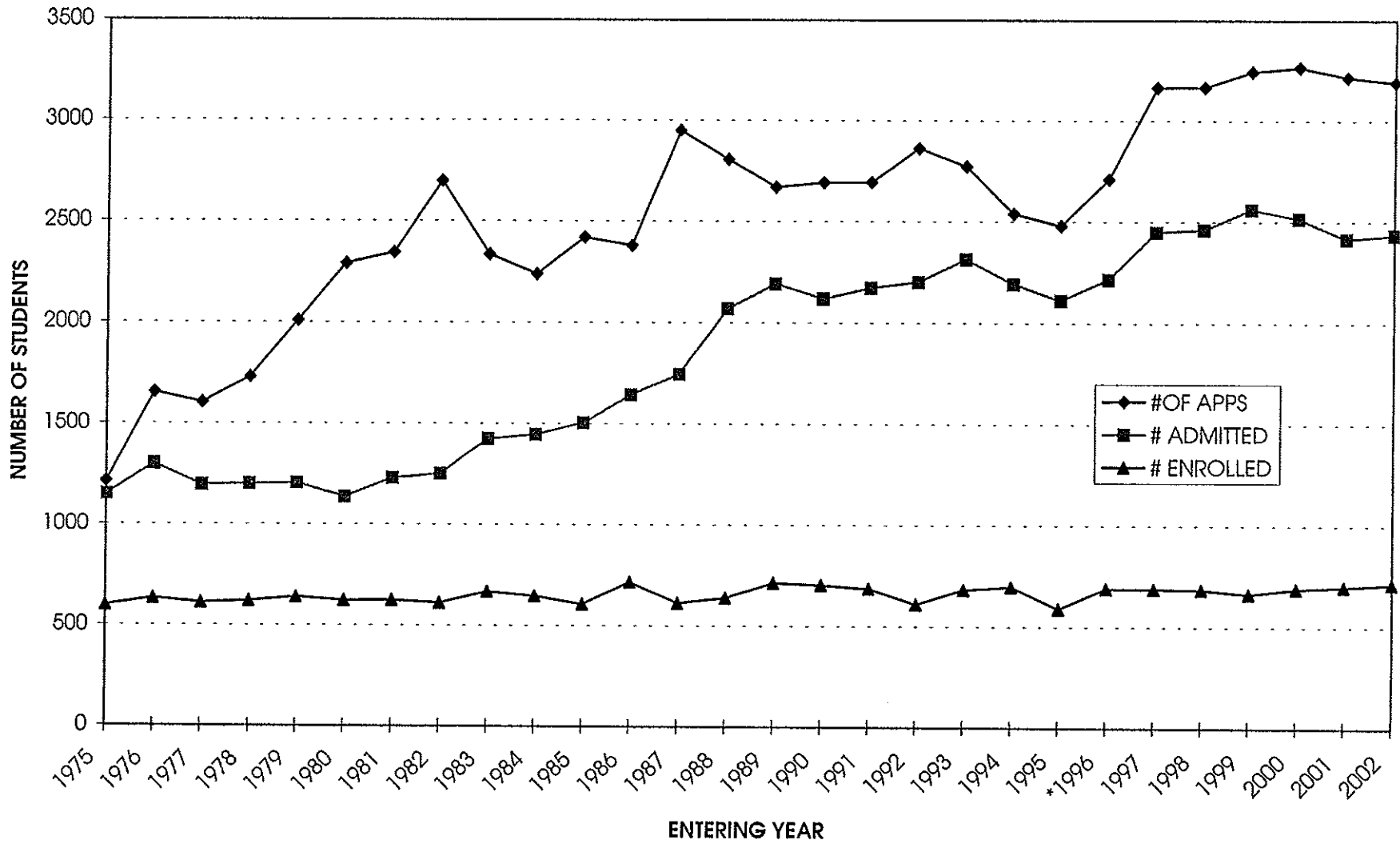
FALL 2002 ENROLLMENT BY MAJOR AND CLASS

CLASS OF:								UNDERGRAD			
	06	05	04	03	02	TR	CO-OP	TOTALS	F/T GRAD	P/T GRAD	GRADUATE TOTALS
ENGINEERING											
BIOMEDICAL	30	33	32	17	0	2	0	114	11	9	20
CIVIL	43	45	38	36	0	5	2	169	17	33	50
CHEMICAL	34	27	20	27	2	5	0	115	24	7	31
ELECTRICAL	98	139	104	117	14	10	1	483	49	57	106
FIRE PROTECTION									41	41	82
INDUSTRIAL	3	5	8	13	1	0	0	30			
MECHANICAL	145	133	133	122	12	5	0	550	44	30	74
MANUFACTURING	3	6	5	0	0	1	0	15	12	11	23
MATERIALS									6	7	13
UNDECLARED (ENGR)	55	4	3	0	0	2	0	64			
SCIENCES											
BIOLOGY/BIOTECH	56	56	53	48	3	3	0	219	18	8	26
BIOCHEMISTRY	15	15	12	14	0	0	1	57	1	1	2
CHEMISTRY	9	4	8	1	3	1	0	26	15	4	19
COMPUTER SCIENCE	149	136	133	92	11	9	0	530	70	105	175
MATH	22	13	23	9	0	1	0	68	22	26	48
PHYSICS	12	18	13	6	1	2	0	52	10	0	10
UNDECLARED (SC)	8	0	0	0	0	0	0	8			
OTHER											
ECON/SOC SCI TECH	2	1	4	3	0	0	0	10			
HUMANITIES	3	0	3	5	0	0	0	11			
INTERDISC	1	1	5	7	0	0	0	14	3	8	11
MANAGEMENT	18	31	47	41	4	2	1	144	17	133	150
UNDECLARED	21	7	1	0	0	0	0	29			
TOTAL	727	674	645	558	51	48	5	2708	360	480	840

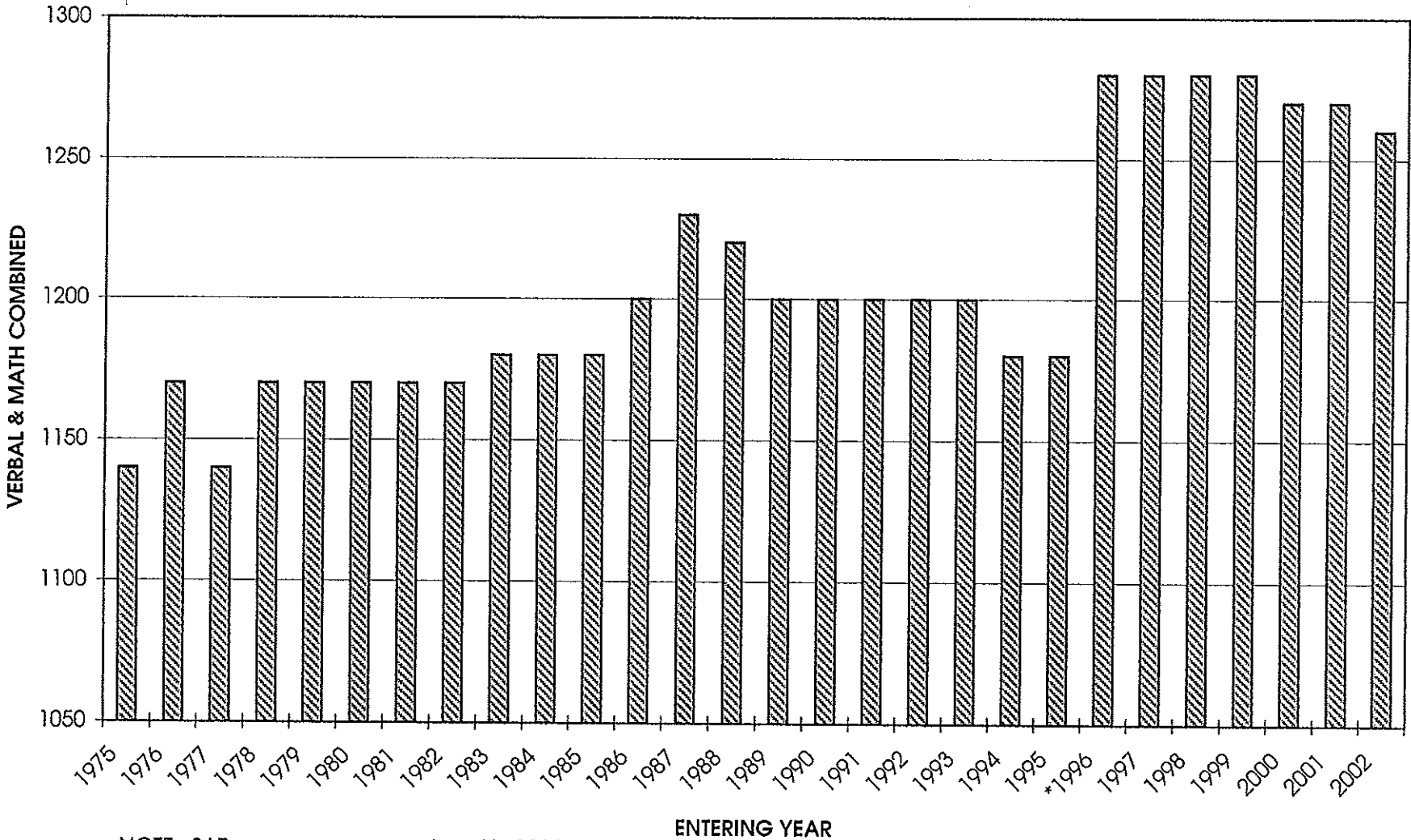
NOTES: Undergraduate data include full-time undergraduates and students on Co-Op.
Graduate data include full-time and part-time students.

Admissions

UNDERGRADUATE ADMISSIONS DATA

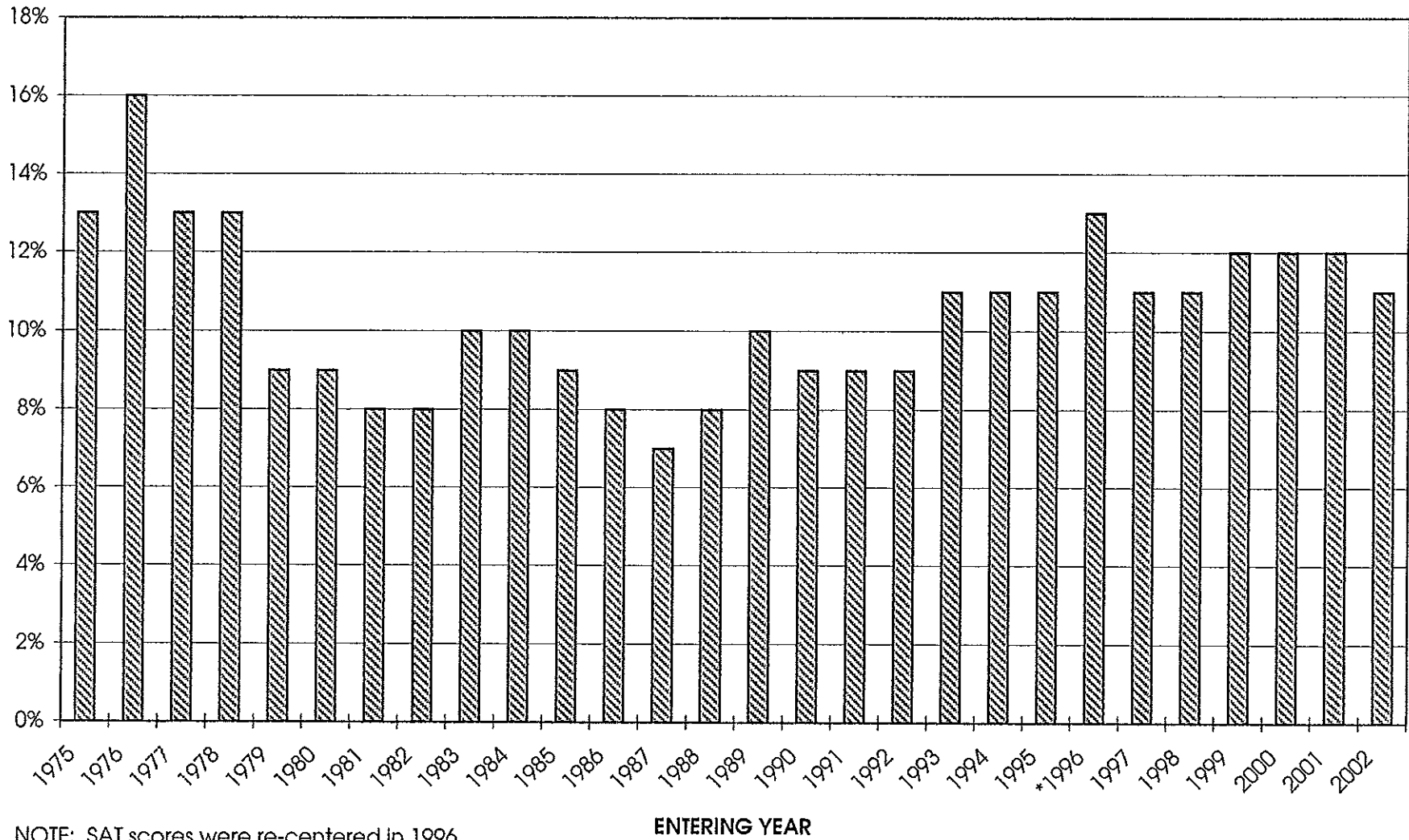


MEDIAN SAT SCORES



NOTE: SAT scores were re-centered in 1996.

MEDIAN CLASS RANK



NOTE: SAT scores were re-centered in 1996

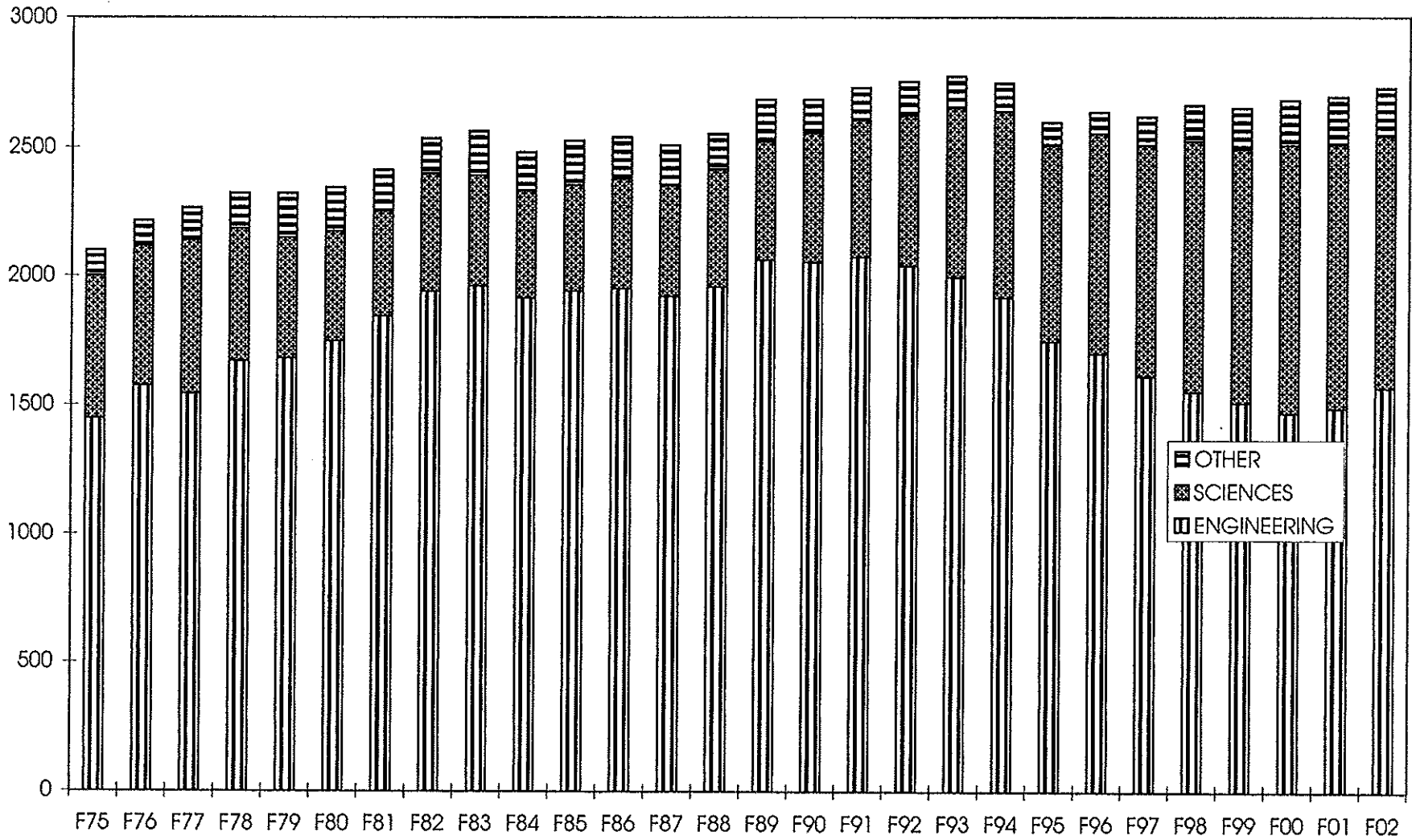
UNDERGRADUATE ADMISSIONS DATA

YEAR	# OF APPS	# ADMITTED	% ADMITTED	# ENROLLED	% YIELD	MEDIAN SAT SCORE (V&M)	MEDIAN CLASS RANK	PERCENTILE RANK
1975	1215	1149	95%	598	52%	1140	13%	87%
1976	1655	1300	79%	632	49%	1170	16%	84%
1977	1605	1195	74%	610	51%	1140	13%	87%
1978	1732	1200	69%	620	52%	1170	13%	87%
1979	2009	1204	60%	639	53%	1170	9%	91%
1980	2290	1136	50%	622	55%	1170	9%	91%
1981	2344	1230	52%	623	51%	1170	8%	92%
1982	2697	1252	46%	610	49%	1170	8%	92%
1983	2335	1425	61%	667	47%	1180	10%	90%
1984	2239	1446	65%	645	45%	1180	10%	90%
1985	2420	1505	62%	606	40%	1180	9%	91%
1986	2380	1644	69%	716	44%	1200	8%	92%
1987	2949	1748	59%	612	35%	1230	7%	93%
1988	2806	2069	74%	639	31%	1220	8%	92%
1989	2670	2193	82%	713	33%	1200	10%	90%
1990	2693	2120	79%	703	33%	1200	9%	91%
1991	2694	2172	81%	685	32%	1200	9%	91%
1992	2862	2201	77%	609	28%	1200	9%	91%
1993	2772	2315	84%	682	29%	1200	11%	89%
1994	2539	2193	86%	697	32%	1180	11%	89%
1995	2480	2112	85%	589	28%	1180	11%	89%
*1996	2710	2215	82%	689	31%	1280	13%	87%
1997	3165	2450	77%	688	28%	1280	11%	89%
1998	3167	2462	78%	684	28%	1280	11%	89%
1999	3244	2562	79%	662	26%	1280	12%	88%
2000	3266	2515	77%	689	27%	1270	12%	88%
2001	3216	2417	75%	700	29%	1270	12%	88%
2002	3191	2436	76%	714	29%	1260	11%	89%

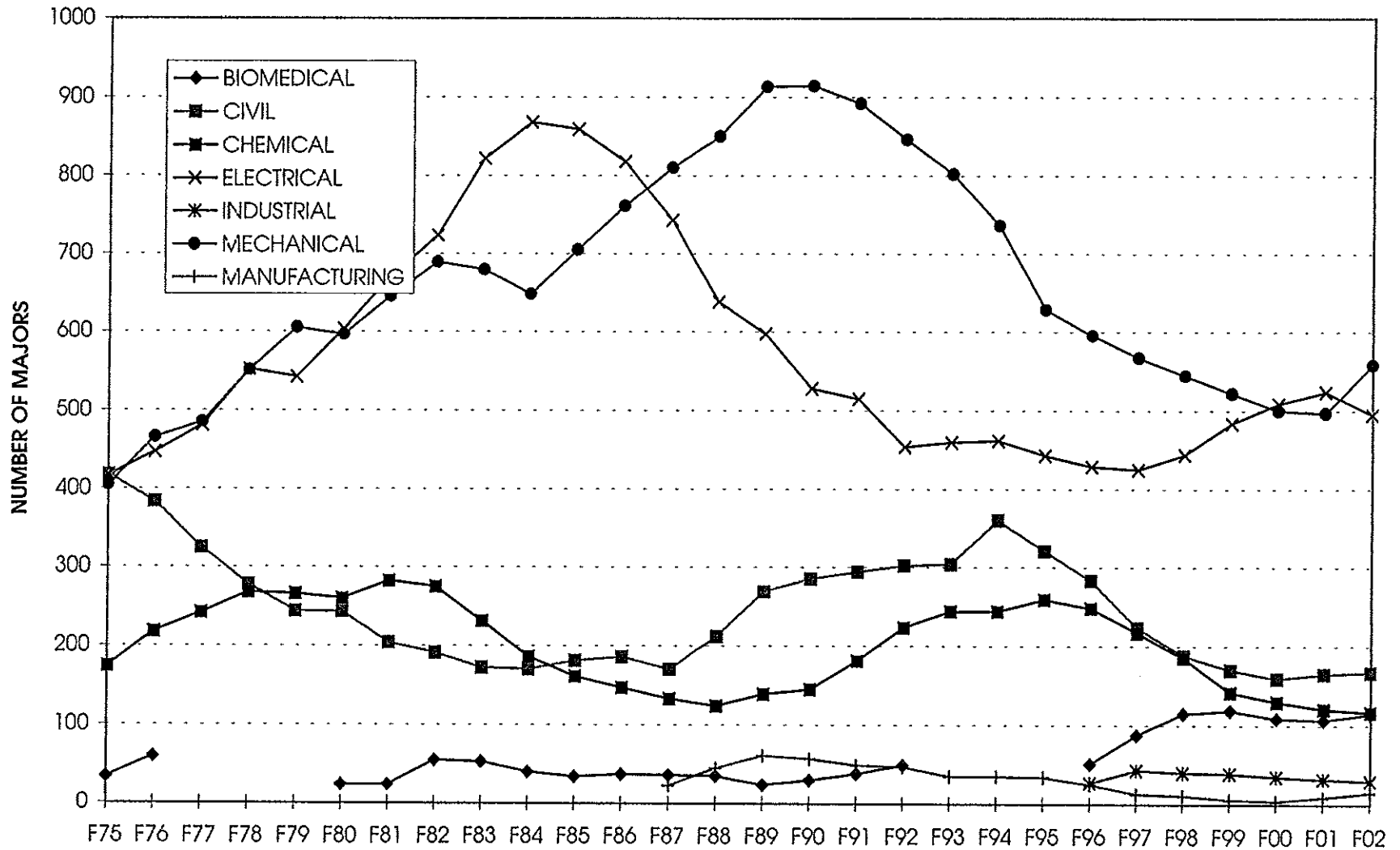
Notes: Figures from 1984 and before include transfer students. SAT scores were re-centered in 1996.

Undergraduate Enrollment

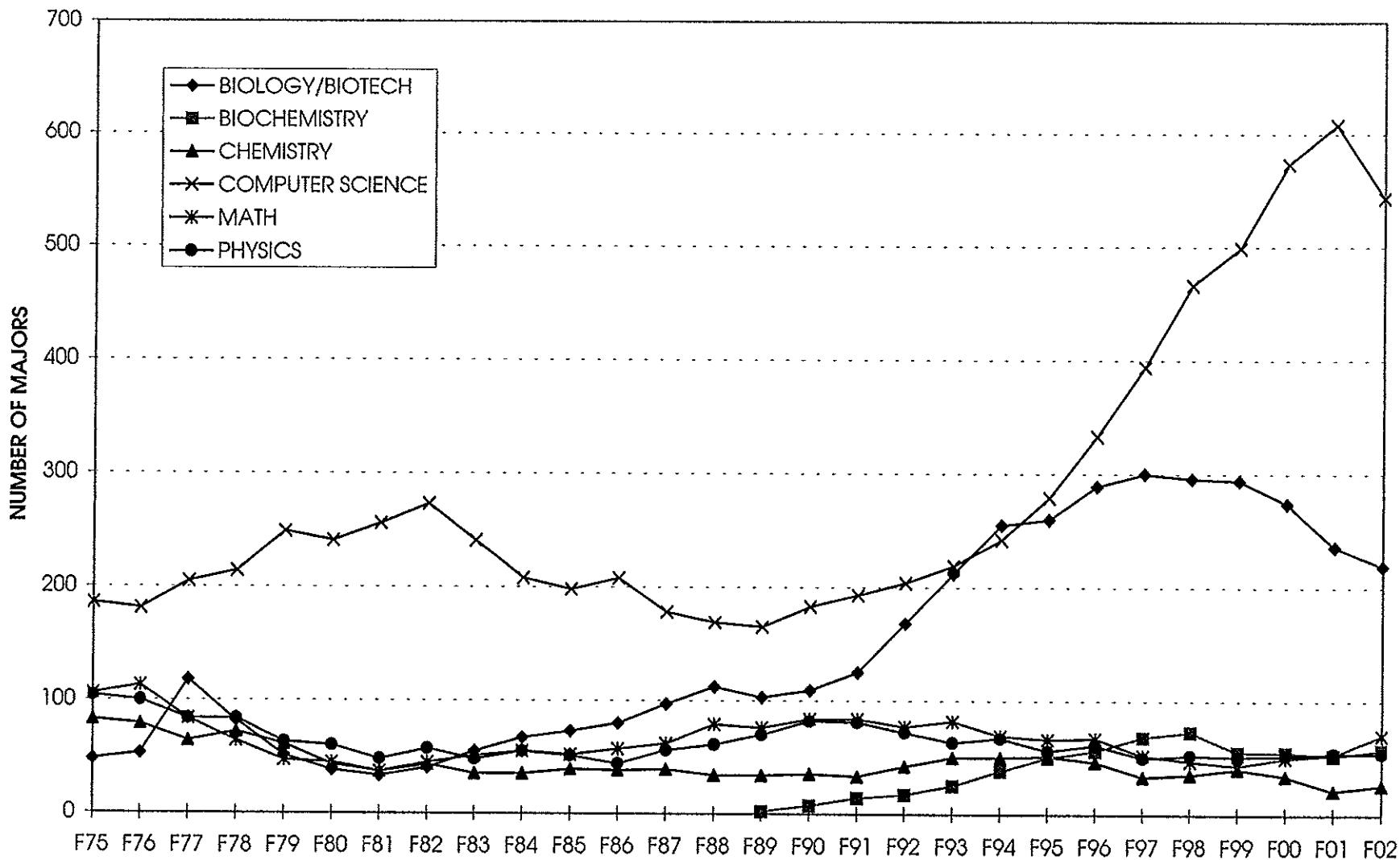
UNDERGRADUATE ENROLLMENT BY CATEGORY



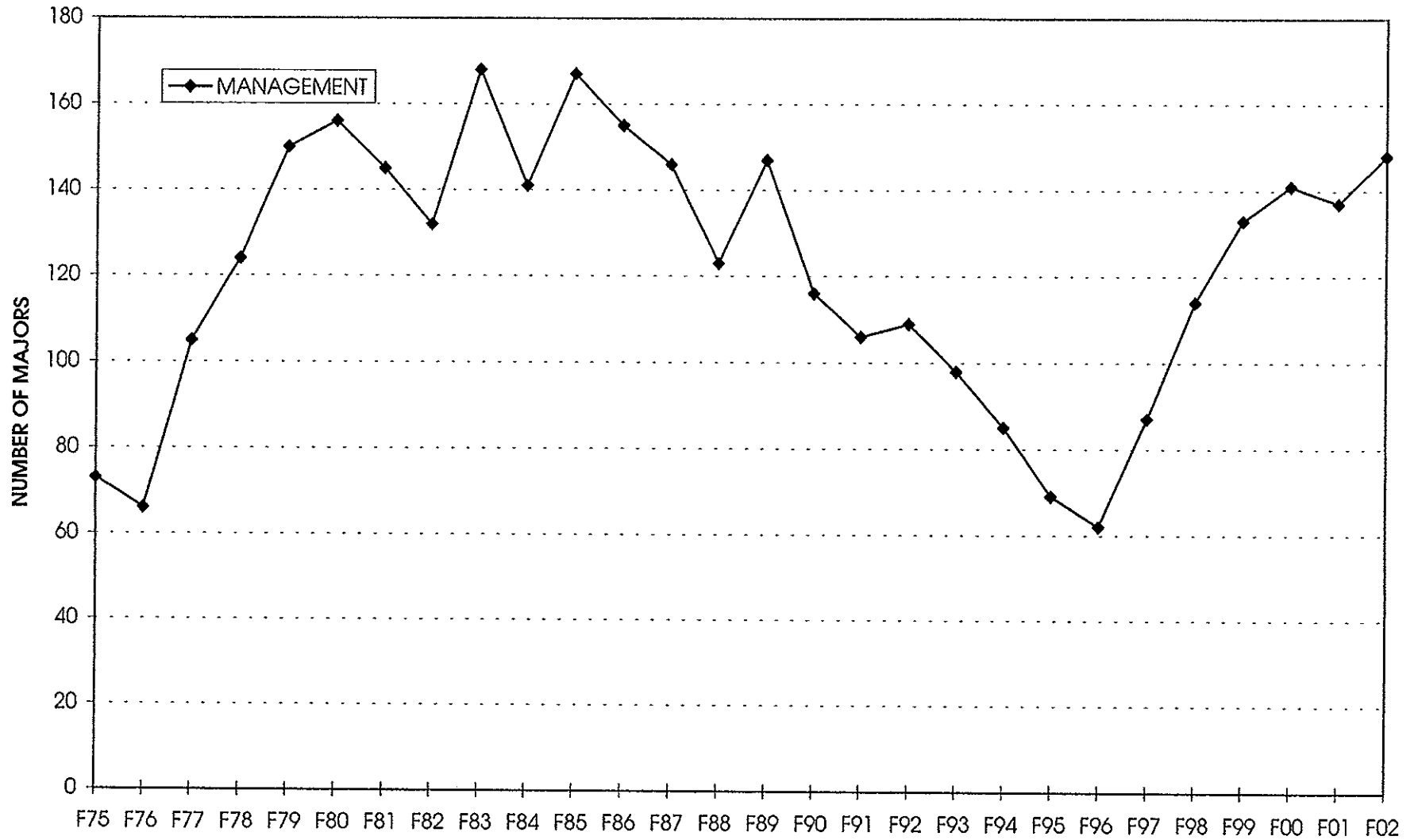
UNDERGRADUATE ENROLLMENT - ENGINEERING



UNDERGRADUATE ENROLLMENT - SCIENCES



UNDERGRADUATE ENROLLMENT - MANAGEMENT



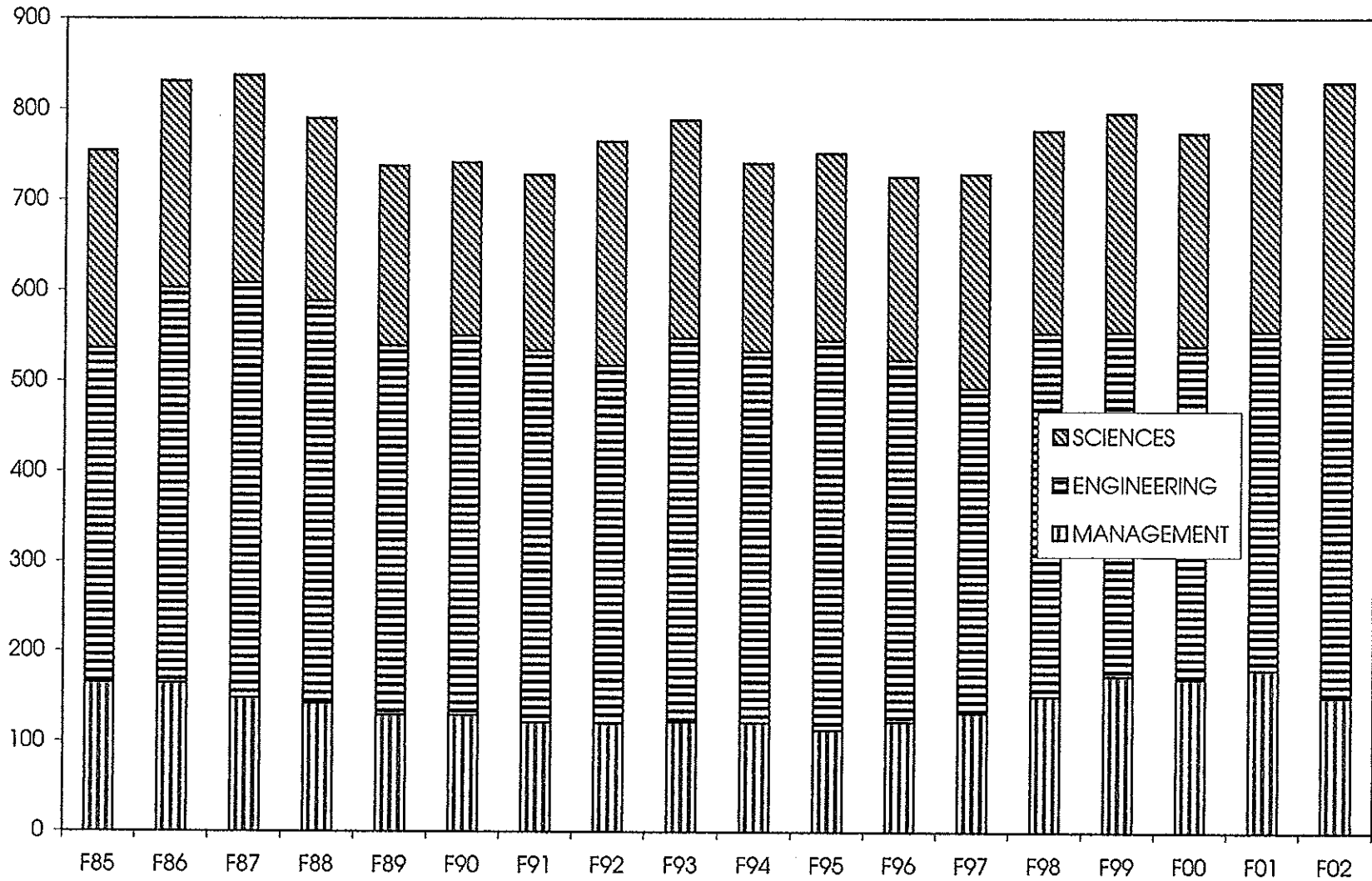
FULL-TIME UNDERGRADUATE ENROLLMENT FROM 1975 TO 2002

	F75	F76	F77	F78	F79	F80	F81	F82	F83	F84	F85	F86	F87	F88	F89	F90	F91	F92	F93	F94	F95	F96	F97	F98	F99	F00	F01	F02
ENGINEERING																												
BIOMEDICAL	34	60				24	24	55	53	40	34	37	36	35	24	30	38	49				51	88	115	119	109	107	115
CIVIL	418	384	325	278	244	243	204	191	172	170	181	186	170	212	269	285	294	302	304	360	321	283	223	188	170	159	165	167
CHEMICAL	174	218	242	268	266	260	282	275	231	186	161	147	133	124	139	145	181	223	244	244	259	248	217	185	142	130	121	117
ELECTRICAL	417	447	481	552	542	603	671	723	822	868	859	818	743	638	597	528	515	454	460	462	443	429	425	444	484	509	524	495
ENVIRONMENTAL			10	20	22	20	17	6	3	1		2	5	4	8	15	27	36	38	18	12	11	5	4	4	2	2	4
INDUSTRIAL																						27	43	40	39	35	32	30
MECHANICAL	405	466	485	551	605	596	645	689	679	648	705	761	810	850	913	914	892	846	802	736	628	595	567	544	522	500	497	558
MANUFACTURING													23	45	61	57	49	47	35	35	34	25	13	11	6	4	9	15
UNDECLARED/ED													49	51	79	77	81	111	59	46	27	28	19	22	19	28	64	
SCIENCES																												
BIOLOGY/BIOTECH	48	53	118	82	51	38	33	40	55	67	73	80	97	112	103	109	125	168	212	255	260	289	300	296	294	274	236	219
BIOCHEMISTRY															2	7	14	17	25	38	50	56	68	73	55	55	52	57
CHEMISTRY	83	79	64	72	61	43	37	43	35	35	39	38	39	34	34	35	33	42	50	50	51	46	33	35	40	34	21	26
COMPUTER SCIENCE	186	181	205	214	249	241	256	273	241	208	198	208	178	169	165	183	193	204	219	242	279	333	394	466	499	573	608	543
ES	19	17	42			1																						
MATH	106	113	84	64	47	45	37	45	51	55	52	57	62	79	76	84	84	77	82	69	66	67	52	47	43	50	53	70
PHYSICS	104	100	84	84	63	60	48	57	48	55	51	44	56	61	70	82	81	72	63	67	56	61	50	52	51	52	54	54
PM	6														7													
UNDECLARED/SC														2	2	1	2	3	5	1	1	3	0	2	1	1	1	8
OTHER																												
ECON/SOC SCI TECH	20	17	7	3	2	3		1	2	2	1	1	3	5	2	4	2	2	6	9	7	4	6	5	7	16	16	10
HUMANITIES&ARTS		3		2						1	1		2	3	2	2	5	5	4	6	6	8	9	13	10	8	13	11
INTERDISC	9	12	13	9	20	11	11	3		2	2	4	4	5	9	5	10	15	14	9	5	8	7	6	7	6	15	15
MANAGEMENT	73	66	105	124	150	156	145	132	168	141	167	155	146	123	147	116	106	109	98	85	69	62	87	114	133	141	137	148
UNDECLARED/ND	60	52	105	71	56	37	63	39	58	60	51	110	98	47	36	26	27	33	29	17	13	11	23	12	27	24	17	31
TOTAL	2162	2268	2370	2394	2378	2381	2473	2572	2618	2539	2575	2648	2605	2597	2717	2707	2755	2785	2801	2762	2606	2644	2638	2671	2675	2701	2708	2757
ENGINEERING	1448	1575	1543	1669	1679	1746	1843	1939	1960	1913	1940	1951	1920	1957	2062	2053	2073	2038	1994	1914	1743	1696	1609	1550	1508	1467	1485	1565
	67%	69%	65%	70%	71%	73%	75%	75%	75%	75%	75%	74%	74%	75%	76%	76%	75%	73%	71%	69%	67%	64%	61%	58%	56%	54%	55%	57%
SCIENCES	552	543	597	516	471	428	411	458	430	420	413	427	432	457	459	501	532	583	656	722	763	855	897	971	983	1039	1025	977
	26%	24%	25%	22%	20%	18%	17%	18%	16%	17%	16%	16%	17%	18%	17%	19%	19%	21%	23%	26%	29%	32%	34%	36%	37%	38%	38%	35%
OTHER	102	98	125	138	172	170	156	136	170	146	171	160	155	136	160	127	123	131	122	109	87	82	109	138	157	171	181	184
	5%	4%	5%	6%	7%	7%	6%	5%	6%	6%	7%	6%	6%	5%	6%	5%	4%	5%	4%	4%	3%	3%	4%	5%	6%	6%	7%	7%
UNDECLARED	60	52	105	71	56	37	63	39	58	60	51	110	98	47	36	26	27	33	29	17	13	11	23	12	27	24	17	31
	3%	2%	4%	3%	2%	2%	3%	2%	2%	2%	2%	4%	4%	2%	1%	1%	1%	1%	1%	1%	0%	0%	1%	0%	1%	1%	1%	1%

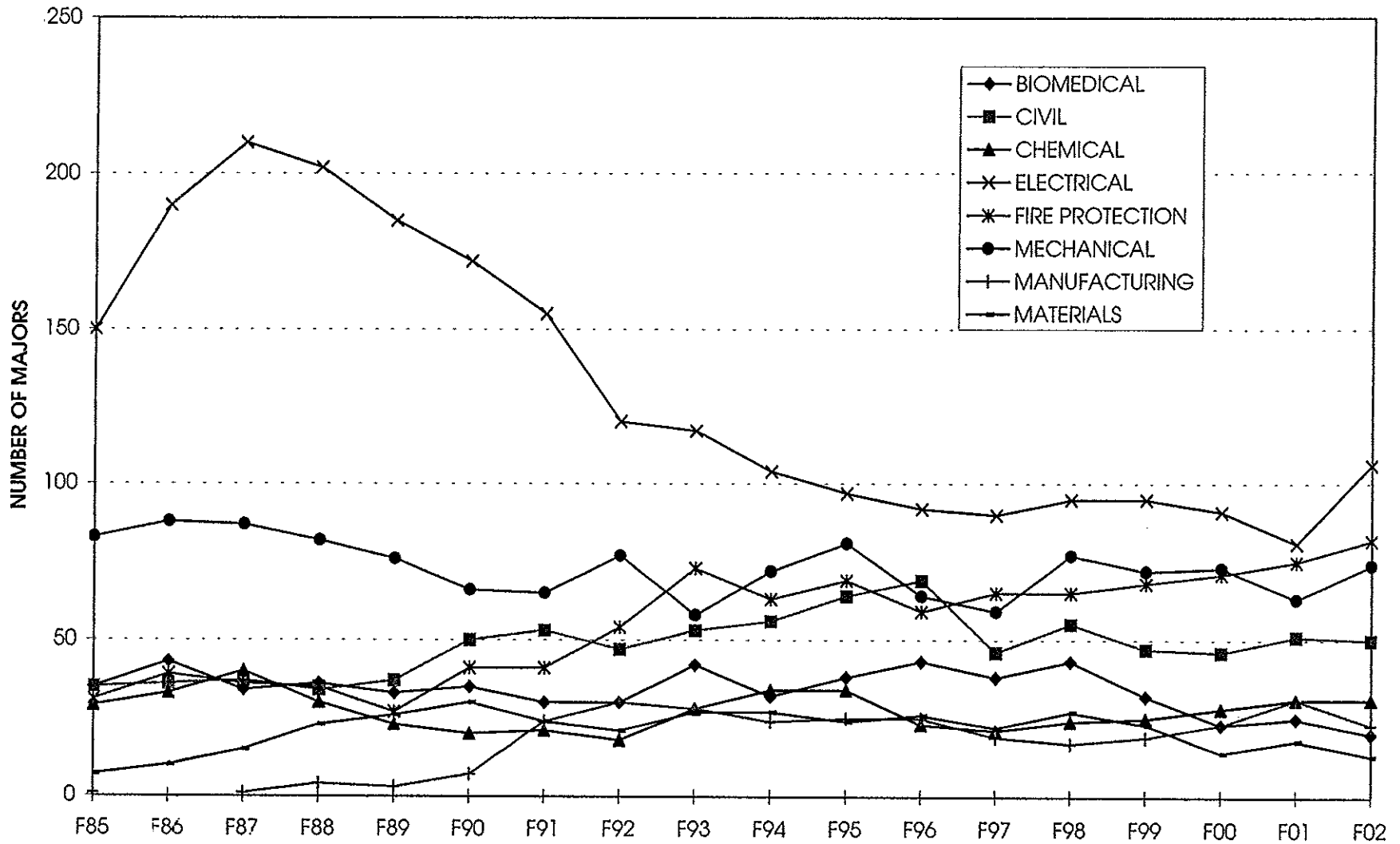
NOTE: Figures are taken from the Official Fall Enrollment Report and include full-time undergraduates including students on Co-Op.

Graduate Enrollment

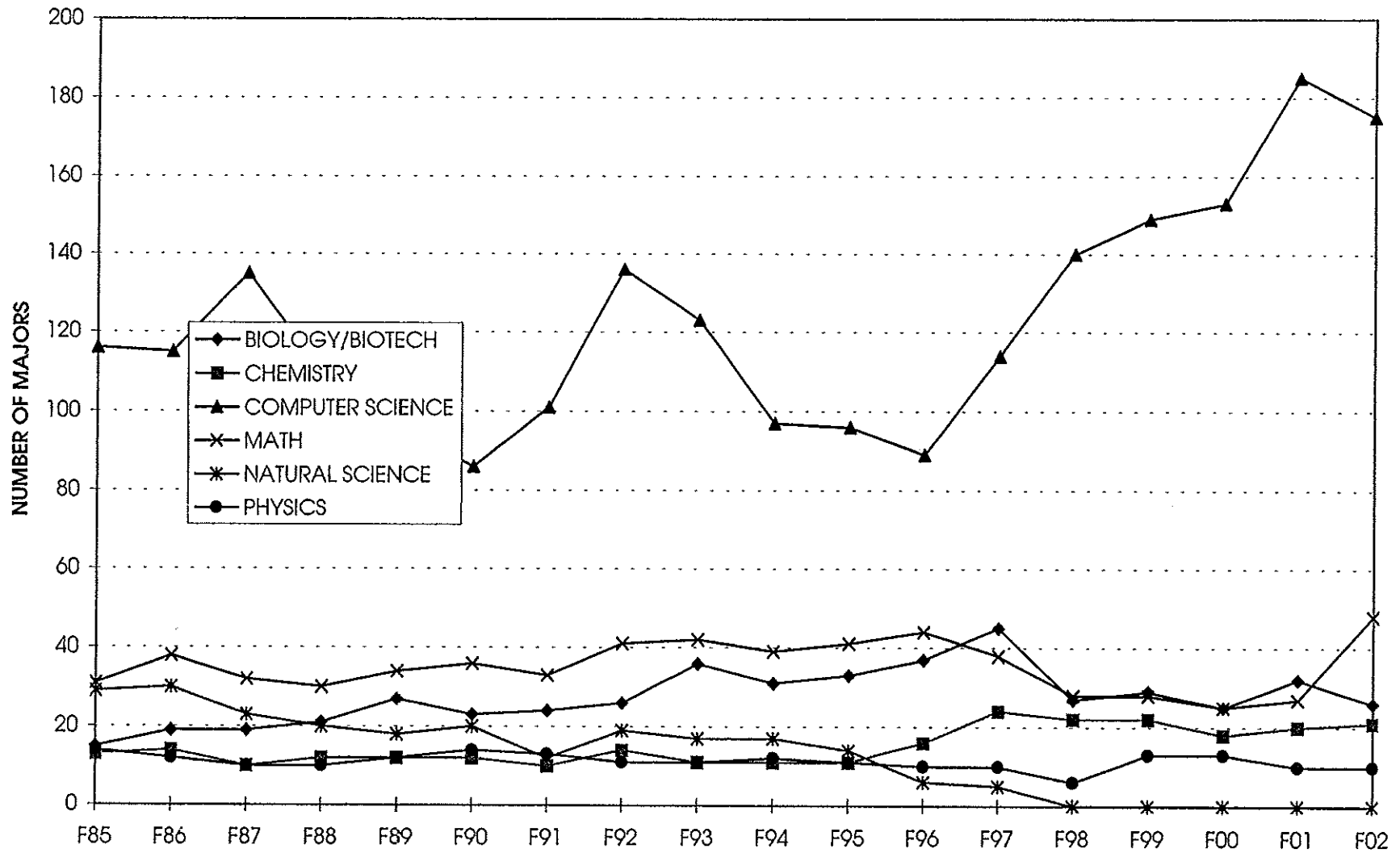
GRADUATE ENROLLMENT BY CATEGORY



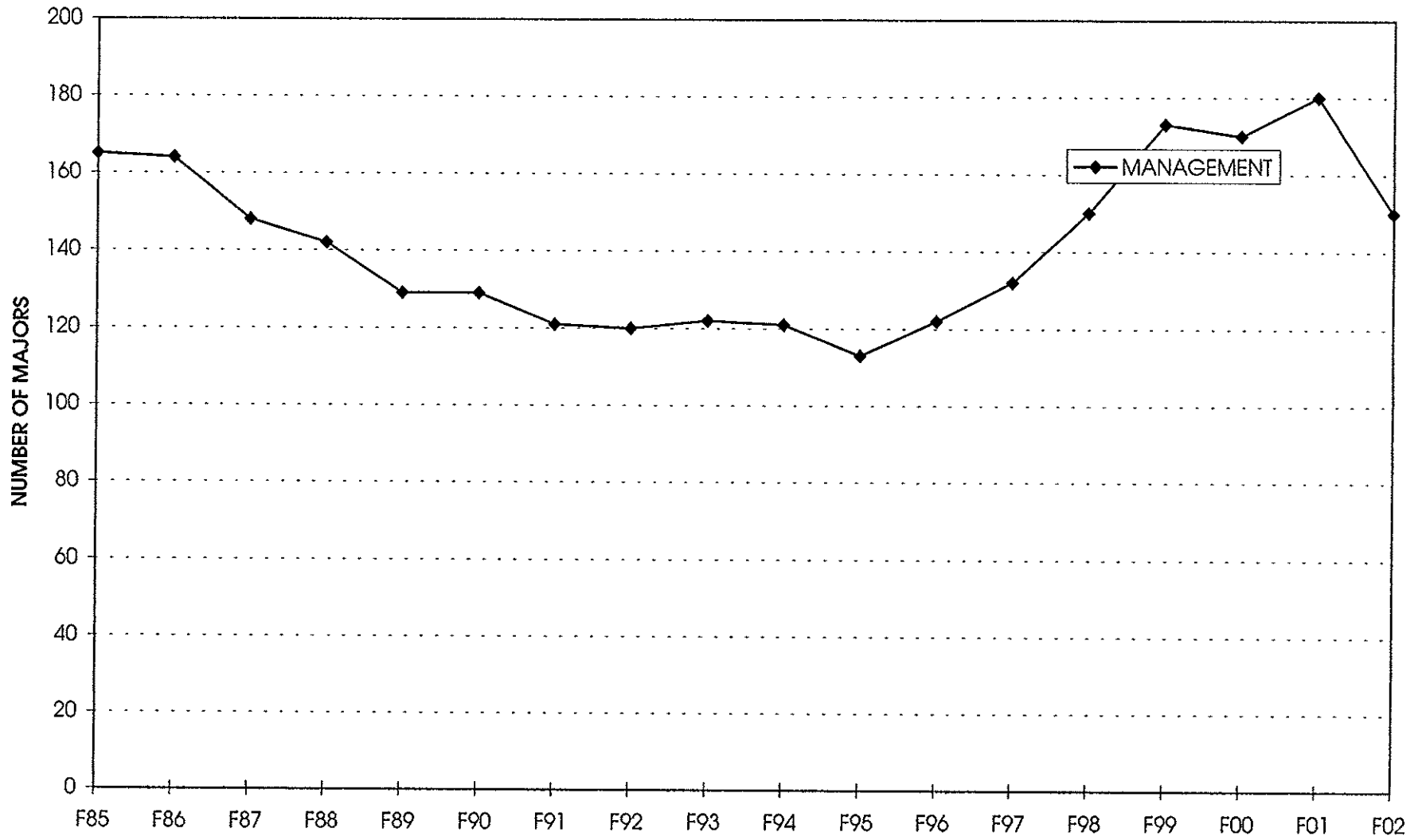
GRADUATE ENROLLMENT - ENGINEERING



GRADUATE ENROLLMENT - SCIENCES



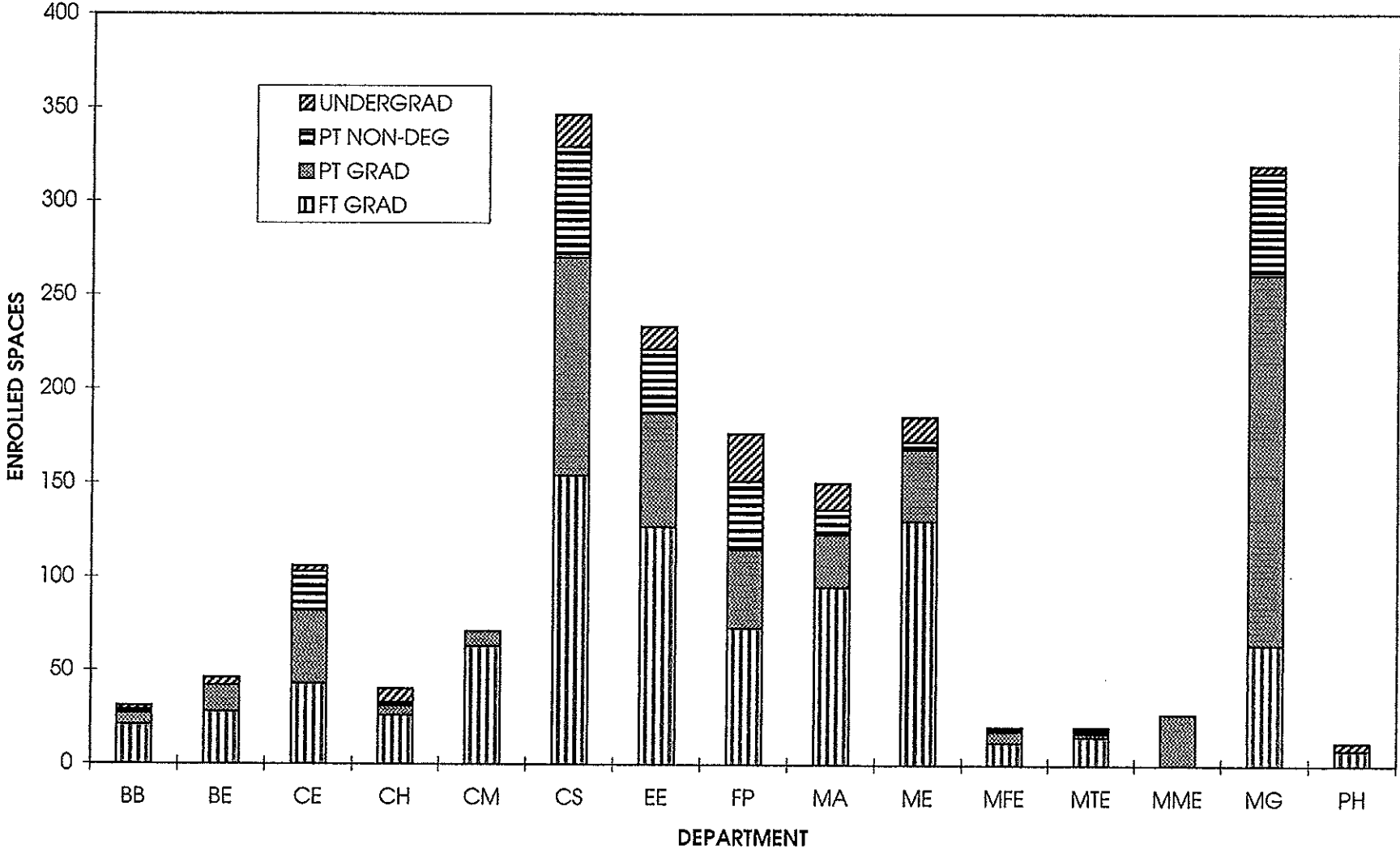
GRADUATE ENROLLMENT - MANAGEMENT



GRADUATE ENROLLMENT BY MAJOR FROM 1985 TO 2002

	F85	F86	F87	F88	F89	F90	F91	F92	F93	F94	F95	F96	F97	F98	F99	F00	F01	F02
ENGINEERING																		
BIOMEDICAL	35	43	34	36	33	35	30	30	42	32	38	43	38	43	32	23	25	20
CIVIL	35	36	37	34	37	50	53	47	53	56	64	69	46	55	47	46	51	50
CHEMICAL	29	33	40	30	23	20	21	18	28	34	34	23	21	24	25	28	31	31
ELECTRICAL	150	190	210	202	185	172	155	120	117	104	97	92	90	95	95	91	81	106
FIRE PROTECTION	31	39	36	35	27	41	41	54	73	63	69	59	65	65	68	71	75	82
MECHANICAL	83	88	87	82	76	66	65	77	58	72	81	64	59	77	72	73	63	74
MANUFACTURING	1		1	4	3	7	24	30	28	24	25	25	19	17	19	23	31	23
MATERIALS	7	10	15	23	26	30	24	21	27	27	24	26	22	27	23	14	18	13
SCIENCES																		
BIOLOGY/BIOTECH	15	19	19	21	27	23	24	26	36	31	33	37	45	27	29	25	32	26
CHEMISTRY	13	14	10	12	12	12	10	14	11	11	11	16	24	22	22	18	20	21
COMPUTER SCIENCE	116	115	135	109	95	86	101	136	123	97	96	89	114	140	149	153	185	175
MATH	31	38	32	30	34	36	33	41	42	39	41	44	38	28	28	25	27	48
NATURAL SCIENCE	29	30	23	20	18	20	12	19	17	17	14	6	6	0	0	0	0	0
PHYSICS	14	12	10	10	12	14	13	11	11	12	11	10	10	6	13	13	10	10
OTHER																		
ID	1		1	3	3	1	1				1	3	2	1	2	2	2	11
MANAGEMENT	165	164	148	142	129	129	121	120	122	121	113	122	132	150	173	170	180	150
UNDECLARED	10	5	6	1		1		4			1	3	1	0	0	0	0	0
SUB-TOTAL F/T & P/T	765	836	844	794	740	743	728	768	788	740	753	731	731	777	797	775	831	840
NON-DEGREE SEEKING	525	412	386	361	397	351	302	288	266	193	252	306	301	274	294	282	233	195
TOTAL GRADUATE ENROLLMENT	1290	1248	1230	1155	1137	1094	1030	1056	1054	933	1005	1037	1032	1051	1091	1057	1064	1035
ENGINEERING	371	439	460	446	410	421	413	397	426	412	432	401	360	403	381	369	375	399
	48%	53%	55%	56%	55%	57%	57%	52%	54%	56%	57%	55%	49%	52%	48%	48%	45%	48%
SCIENCES	218	228	229	202	198	191	193	247	240	207	206	202	236	223	241	234	274	280
	28%	27%	27%	25%	27%	26%	27%	32%	30%	28%	27%	28%	32%	29%	30%	30%	33%	33%
OTHER	166	164	149	145	132	130	122	120	122	121	114	125	134	151	175	172	182	161
	22%	20%	18%	18%	18%	17%	17%	16%	15%	16%	15%	17%	18%	19%	22%	22%	22%	19%
UNDECLARED	10	5	6	1	0	1	0	4	0	0	1	3	1	0	0	0	0	0
NON-DEGREE SEEKING	525	412	386	361	397	351	302	288	266	193	252	306	301	274	294	282	233	195

ENROLLED SPACES IN GRADUATE COURSES



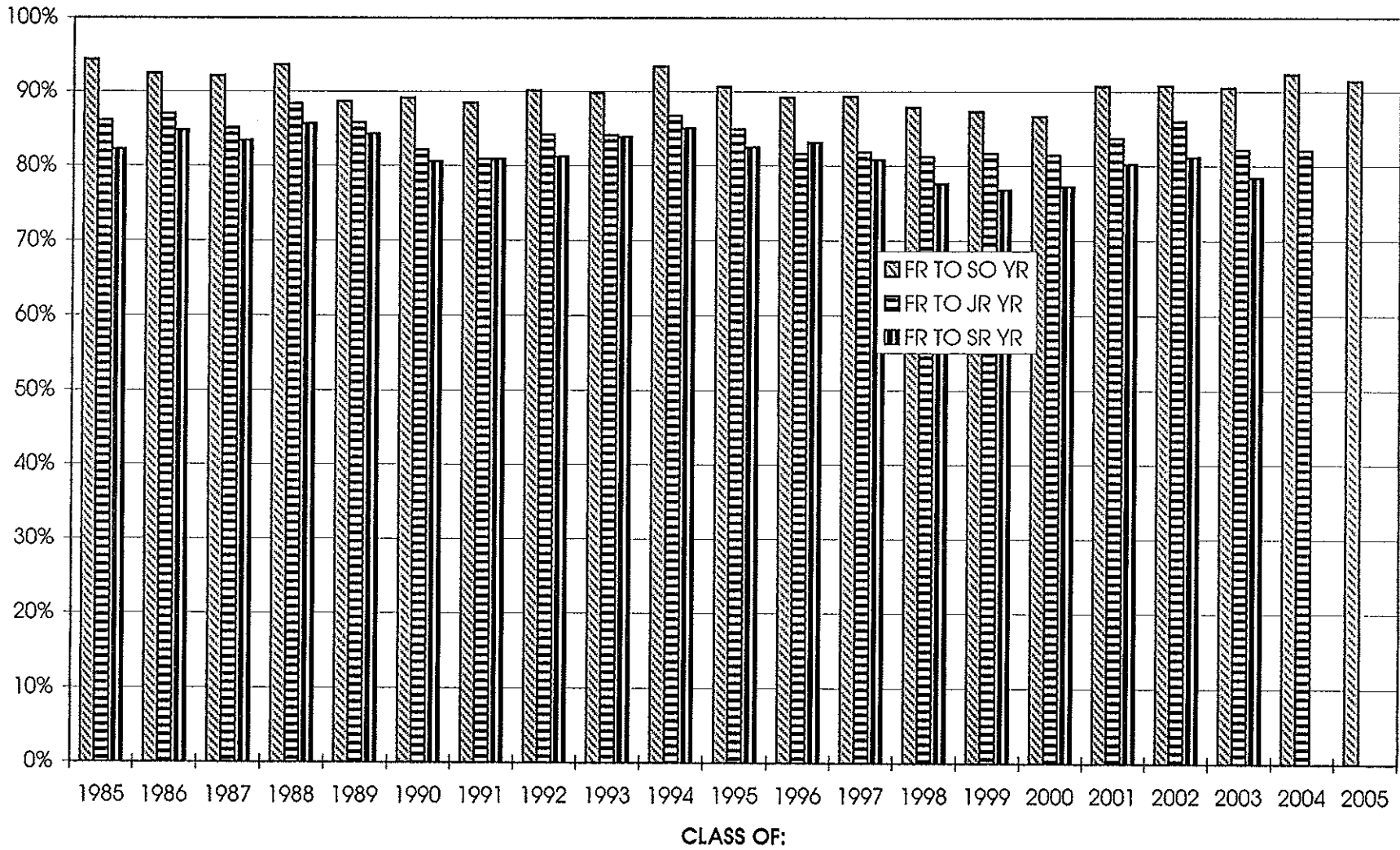
ENROLLED SPACES IN GRADUATE COURSES

FALL 2002

	FT GRAD	PT GRAD	PT NON-DEG	UNDERGRAD	TOTAL
BB	21	6	2	2	31
BE	28	14	0	4	46
CE	43	39	21	3	106
CH	26	5	2	7	40
CM	63	8	0	0	71
CS	154	116	59	17	346
EE	127	60	34	12	233
FP	73	42	36	25	176
MA	95	28	13	14	150
ME	130	38	4	13	185
MFE	12	6	1	1	20
MTE	15	2	2	1	20
MME	0	27	0	0	27
MG	64	197	54	4	319
PH	8	0	0	4	12

Retention and Graduation

UNDERGRADUATE RETENTION RATES



FALL-TO-FALL RETENTION RATES FOR CLASS COHORTS

CLASS OF:	1985	1986	1987	1988	1989	1990	1991	1992	1993	1994	1995	1996	1997	1998	1999	2000	2001	2002	2003	2004	2005
ENTERED FALL:	1981	1982	1983	1984	1985	1986	1987	1988	1989	1990	1991	1992	1993	1994	1995	1996	1997	1998	1999	2000	2001
COHORTS																					
YEAR 1	562 100%	592 100%	644 100%	627 100%	606 100%	716 100%	612 100%	639 100%	713 100%	703 100%	685 100%	609 100%	682 100%	697 100%	589 100%	689 100%	688 100%	684 100%	662 100%	689 100%	700 100%
YEAR 2 FR TO SO YR	530 94%	547 92%	593 92%	587 94%	537 89%	638 89%	541 88%	576 90%	640 90%	656 93%	621 91%	543 89%	609 89%	612 88%	514 87%	597 87%	624 91%	621 91%	599 90%	636 92%	640 91%
YEAR 3 FR TO JR YR	484 86%	515 87%	548 85%	554 88%	520 86%	588 82%	495 81%	538 84%	600 84%	610 87%	582 85%	497 82%	558 82%	566 81%	481 82%	561 81%	576 84%	588 86%	544 82%	565 82%	
YEAR 4 FR TO SR YR	462 82%	502 85%	537 83%	537 86%	511 84%	577 81%	495 81%	519 81%	598 84%	598 85%	565 82%	506 83%	551 81%	541 78%	452 77%	532 77%	552 80%	555 81%	519 78%		
YEAR 5	91 16%	86 15%	94 15%	117 19%	131 22%	118 16%	86 14%	130 20%	138 19%	140 20%	118 17%	108 18%	136 20%	148 21%	108 18%	100 15%	120 17%	85 12%			
YEAR 6	12 2%	8 1%	7 1%	10 2%	7 1%	22 3%	5 1%	17 3%	20 3%	20 3%	20 3%	13 2%	17 2%	38 5%	25 4%	14 2%	17 2%				

Cohorts are comprised of the students in the entering freshman class. They exclude transfer students. Students are never added to a cohort.

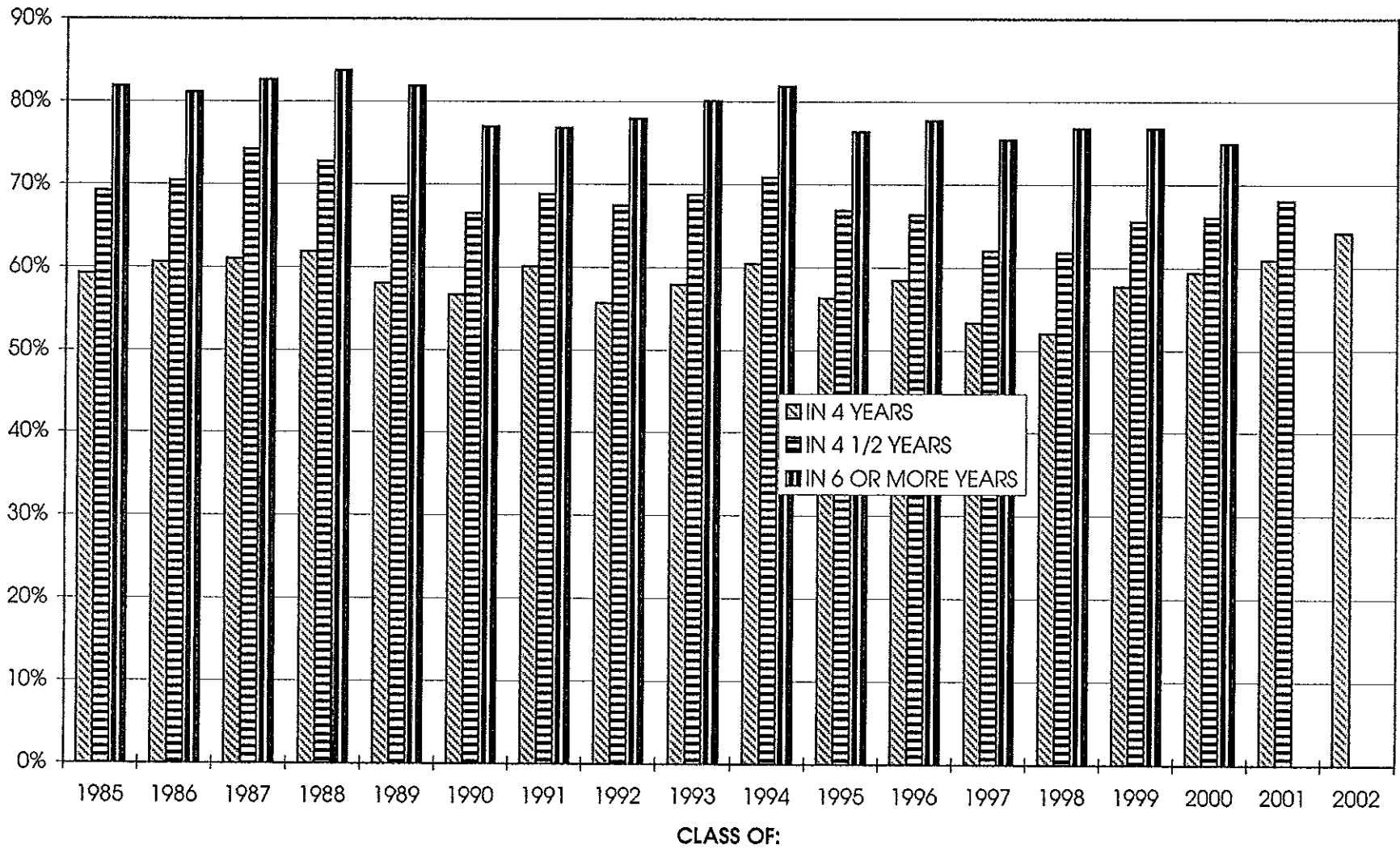
* The Class of 1989 was the first class required to meet distribution requirements.

** The Class of 1992 was the first class required to meet the 15 unit rule.

BACHELORS DEGREES AWARDED

	85-86	86-87	87-88	88-89	89-90	90-91	91-92	92-93	93-94	94-95	95-96	96-97	97-98	98-99	99-00	00-01	01-02
ENGINEERING																	
BIOMEDICAL	0	0	0	0	0	0	0	0	0	0	0	0	4	11	31	19	27
CIVIL	50	54	43	39	72	75	69	98	92	91	96	93	75	55	52	40	42
CHEMICAL	41	30	37	24	23	33	25	31	40	44	55	55	58	52	49	31	26
ELECTRICAL	176	206	200	138	167	120	112	114	101	110	92	101	89	99	88	99	122
ENVIRONMENTAL	0	0	0	0	0	0	1	0	0	1	0	0	0	0	0	0	0
INDUSTRIAL	0	0	0	0	0	0	0	0	0	0	4	5	11	13	13	13	5
MECHANICAL	154	169	178	193	196	221	165	220	213	208	173	138	157	122	146	119	107
MANAGEMENT													8	14	20	16	6
MANUFACTURING	0	0	7	14	20	18	22	21	7	12	10	12	4	5	4	2	4
SCIENCES																	
BIOLOGY/BIOTECH	13	14	21	17	19	31	22	32	37	46	52	61	59	65	62	74	76
BIOCHEMISTRY						2	2	5	1	6	9	7	12	20	10	16	8
CHEMISTRY	14	7	8	12	10	4	3	8	9	9	9	17	6	7	13	10	6
COMPUTER SCI	34	39	44	49	19	29	48	43	42	33	38	49	63	69	70	95	110
MATH	11	15	11	16	12	21	16	19	24	17	17	15	14	15	7	8	12
PHYSICS	11	9	8	8	13	11	10	10	15	14	8	7	14	6	9	6	12
OTHER																	
ECON/SOC SCI TECH	1	0	1	0	0	2	1	1	1	3	1	1	1	2	2	5	4
HUMANITIES&ARTS	2	0	0	2	2	0	2	2	3	4	2	2	6	4	5	5	5
INTERDISC	0	2	1	0	0	1	3	3	10	2	4	4	1	1	1	2	6
MANAGEMENT	53	63	58	44	53	37	38	30	41	28	15	12	7	17	15	25	36
UNKNOWN	2	0	0	0	0	0	0	0	0	0	0	0	0	0	0	0	0
TOTAL	562	608	617	556	606	605	539	637	636	628	585	579	589	577	597	585	614

UNDERGRADUATE GRADUATION RATES



GRADUATION RATES FOR CLASS COHORTS

CLASS OF:	1985	1986	1987	1988	1989	1990	1991	1992	1993	1994	1995	1996	1997	1998	1999	2000	2001	2002	
					*			**											
ENTERED FALL:	1981	1982	1983	1984	1985	1986	1987	1988	1989	1990	1991	1992	1993	1994	1995	1996	1997	1998	
(MAY) IN 4 YEARS	333 59%	359 61%	393 61%	388 62%	352 58%	406 57%	368 60%	356 56%	413 58%	425 60%	386 56%	356 58%	364 53%	363 52%	340 58%	409 59%	419 61%	439 64%	
(OCT + FEB) IN 4 1/2 YEARS	389 69%	417 70%	478 74%	456 73%	415 68%	476 66%	421 69%	431 67%	490 69%	498 71%	458 67%	404 66%	423 62%	431 62%	386 66%	455 66%	468 68%		
(MAY) IN 5 YEARS	435 77%	459 78%	516 80%	514 82%	481 79%	529 74%	456 75%	479 75%	546 77%	552 79%	505 74%	456 75%	496 73%	488 70%	428 73%	502 73%	515 75%		
(OCT + FEB) IN 5 1/2 YEARS	444 79%	469 79%	524 81%	518 83%	487 80%	540 75%	465 76%	488 76%	556 78%	563 80%	513 75%	463 76%	511 75%	521 75%	438 74%	509 74%			
IN 6 OR MORE YEARS	460 82%	480 81%	532 83%	525 84%	496 82%	551 77%	470 77%	498 78%	571 80%	575 82%	523 76%	473 78%	514 75%	535 77%	452 77%	516 75%			

Cohorts are comprised of the students in the entering freshman class (excluding transfer students). Students are never added to a cohort.

* The Class of 1989 was the first class required to meet distribution requirements.

** The Class of 1992 was the first class required to meet the 15 unit rule.

GRADUATE DEGREES AWARDED

ACADEMIC YEAR	88-89		89-90		90-91		91-92		92-93		93-94		94-95		95-96		96-97		97-98		98-99		99-00		00-01		01-02	
	MAST	PHD	MAST	PHD	MAST	PHD	MAST	PHD	MAST	PHD	MAST	PHD	MAST	PHD	MAST	PHD	MAST	PHD	MAST	PHD	MAST	PHD	MAST	PHD	MAST	PHD	MAST	PHD
ENGINEERING																												
BIOMED	16	0	13	1	10	2	6	1	10	3	9	1	10	2	10	0	11	1	10	6	14	0	16	2	16	1	11	1
CIVIL	6	0	5	0	9	0	13	0	8	2	4	0	8	0	5	4	19	0	10	3	10	0	13	0	4	0	8	0
CHEMICAL	15	2	6	3	3	2	7	1	1	4	1	3	3	0	11	2	9	3	4	0	7	0	2	2	4	3	5	4
ELECTRICAL	46	2	56	9	52	7	57	5	41	7	31	2	41	3	37	2	31	1	31	6	30	3	22	3	26	3	32	4
ENVIRONMENTAL	0	0	0	0	1	0	0	0	4	0	8	0	7	0	4	0	16	0	6	1	10	0	4	0	10	0	6	0
FIRE PROTECTION	15	0	5	0	15	0	8	0	9	0	21	0	24	0	24	0	25	0	26	0	24	1	25	0	24	2	27	1
MECHANICAL	19	6	21	3	17	2	17	1	13	2	24	2	14	0	23	0	20	2	14	3	20	5	27	1	20	2	29	3
MANUFACTURING	0	0	2	0	1	0	4	0	6	0	8	1	6	1	4	0	4	2	7	3	6	0	9	0	5	0	14	6
MATERIALS	4	0	9	1	9	2	8	0	6	0	10	0	3	2	8	0	3	0	5	1	6	0	8	2	10	2	7	0
SCIENCES																												
BIOLOGY/BIOTECH	8	0	4	1	5	3	3	2	4	4	12	5	6	2	6	3	10	0	13	1	17	3	12	1	11	0	7	3
CHEMISTRY	0	1	3	2	1	0	1	2	0	2	4	0	0	3	3	0	0	0	3	0	8	2	7	1	1	1	5	3
COMPUTER SCI	27	2	35	1	29	0	23	0	30	0	44	2	28	0	38	1	30	0	28	0	45	0	57	2	55	1	66	1
MATH	14	0	11	0	8	0	9	0	4	0	12	0	11	0	10	0	13	1	12	0	16	0	10	1	7	0	7	0
NATURAL SCIENCE	0	0	9	0	0	0	8	0	0	0	9	0	0	0	9	0	0	0	5	0	0	0	0	0	0	0	0	0
PHYSICS	0	0	0	1	0	2	4	0	0	4	1	0	2	0	1	0	0	2	1	2	0	1	0	1	1	1	1	0
OTHER																												
INTERDISC	0	0	0	2	0	1	0	0	0	0	0	1	0	0	0	1	0	0	0	1	0	2	0	1	0	1	3	0
MANAGEMENT	23	0	36	0	43	0	31	0	29	0	26	0	25	0	44	0	27	0	33	0	21	0	46	0	53	0	64	0
UNKNOWN	0	0	0	0	0	0	0	0	0	0	0	0	0	0	0	0	0	0	0	0	0	0	0	0	0	0	0	0
TOTAL	193	13	215	24	203	21	199	12	165	28	224	17	188	13	237	13	218	12	208	27	234	17	258	17	247	17	292	26